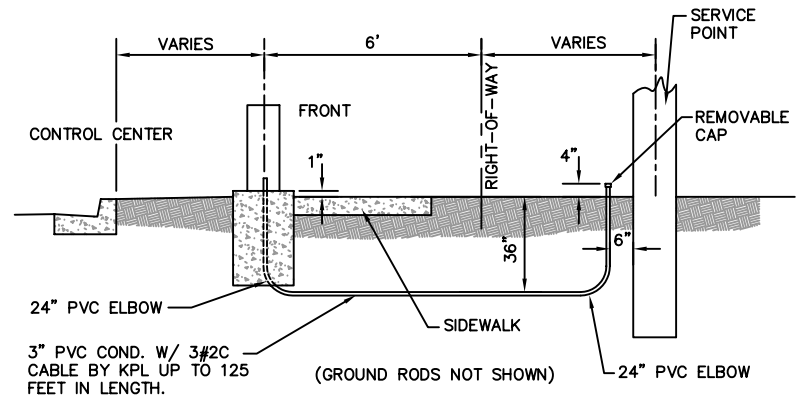


**CIRCUIT DIRECTORY**

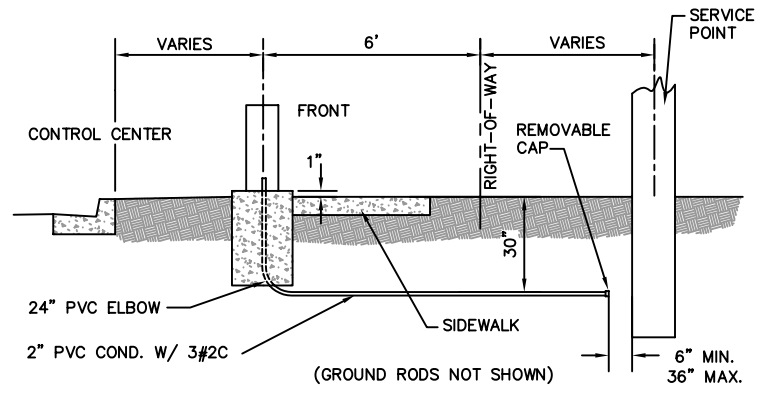
NO.	DESCRIPTION	QTY	AMP	POLE
1,2	MAIN	1	100	2
3,4	BRKR. 1	1	20	2
5,6	BRKR. 2	1	20	2
7,8	BRKR. 3	1	20	2
9,10	BRKR. 4	1	20	2
11	BRKR. 5	1	15	1
12	BRKR. 6	1	20	1
	RELAY 1	1	20	2
	RELAY 2	1	20	2
	RELAY 3	1	20	2
	RELAY 4	1	20	2

FOR 200 AMP SERVICE USE 30 AMP BREAKERS AND RELAYS FOR BRANCH CIRCUITS.



- CONTROL CENTER SERVICE NOTES:**
- UL LISTED NONMETALLIC GRAY SCHEDULE 40 PVC CONDUIT SHALL BE INSTALLED FROM THE CONTROL CENTER TO THE SERVICE POINT (POLE, SECONDARY PEDESTAL, OR PAD MOUNT TRANSFORMER) AS DESIGNATED BY KPL.
  - CONDUIT SHALL BE INSTALL IN ACCORDANCE WITH TRENCHING DETAILS WITH 36" OF COVER BELOW FINISH GRADE. BACKFILL COMPACTION FOR THE CONDUIT TRENCH SHALL BE 95% OF MAXIMUM DENSITY (ASTM D698).
  - CONDUIT SHALL BE INSTALL IN A STRAIGHT LINE. ONLY TWO VERTICAL 90 DEGREE TURNS AND ONE 90 DEGREE TURN SHALL BE ALLOWED. THE TOTAL CHANGE IN ANGULAR DIRECTION SHALL NOT EXCEED 270 DEGREES.
  - A PULL ROPE SHALL BE INSTALLED IN THE CONDUIT BY THE CONTRACTOR. THE CONTRACTOR SHALL BE RESPONSIBLE FOR REPLACING PULL ROPES THAT BREAK.

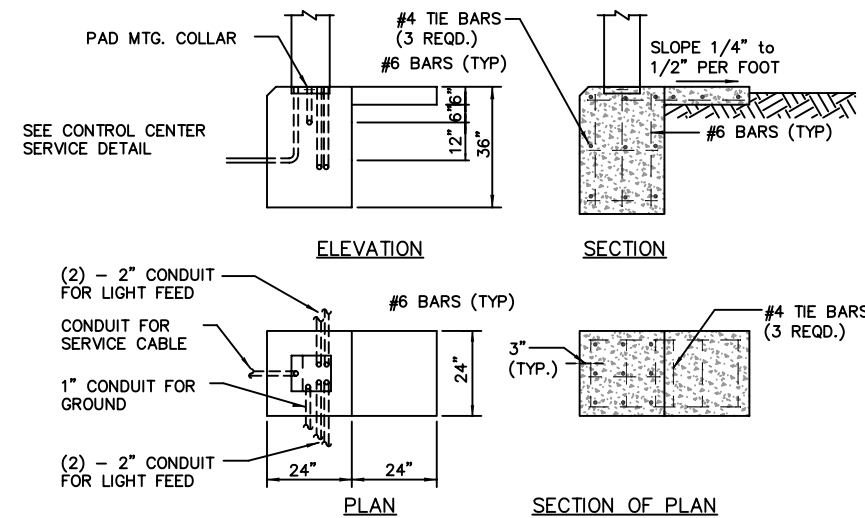
CONTROL CENTER SERVICE (KPL)



- CONTROL CENTER SERVICE NOTES:**
- UL LISTED NONMETALLIC GRAY SCHEDULE 40 PVC CONDUIT SHALL BE INSTALLED FROM THE CONTROL CENTER TO THE SERVICE POINT (POLE, SECONDARY PEDESTAL, OR PAD MOUNT TRANSFORMER) AS DESIGNATED BY KCPL.
  - CONDUIT SHALL BE INSTALL IN ACCORDANCE WITH TRENCHING DETAILS WITH 30" OF COVER BELOW FINISH GRADE.
  - CONDUIT SHALL BE INSTALL IN A STRAIGHT LINE. ONLY TWO VERTICAL 90 DEGREE TURNS AND ONE 90 DEGREE TURN SHALL BE ALLOWED. THE TOTAL CHANGE IN ANGULAR DIRECTION SHALL NOT EXCEED 270 DEGREES.
  - A PULL ROPE SHALL BE INSTALLED IN THE CONDUIT BY THE CONTRACTOR. THE CONTRACTOR SHALL BE RESPONSIBLE FOR REPLACING PULL ROPES THAT BREAK.
  - POWER LEAD-IN CABLE THAT IS INSTALLED BY THE CONTRACTOR PER KCPL SHALL HAVE AN AMPACITY RATING NOT LESS THAN 80% OF THE MAXIMUM RATING OF THE CONTROL CENTER.

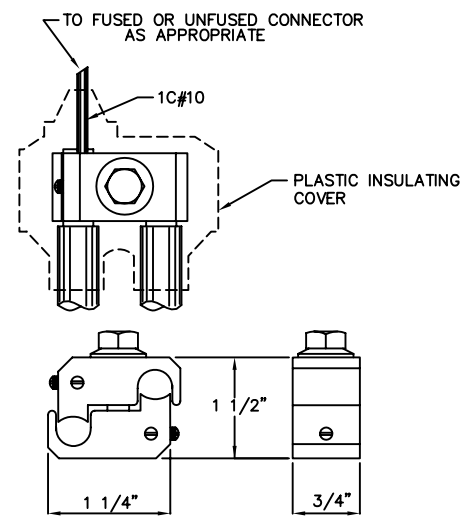
CONTROL CENTER SERVICE (KCPL)

PAD MOUNTED CONTROL CENTER

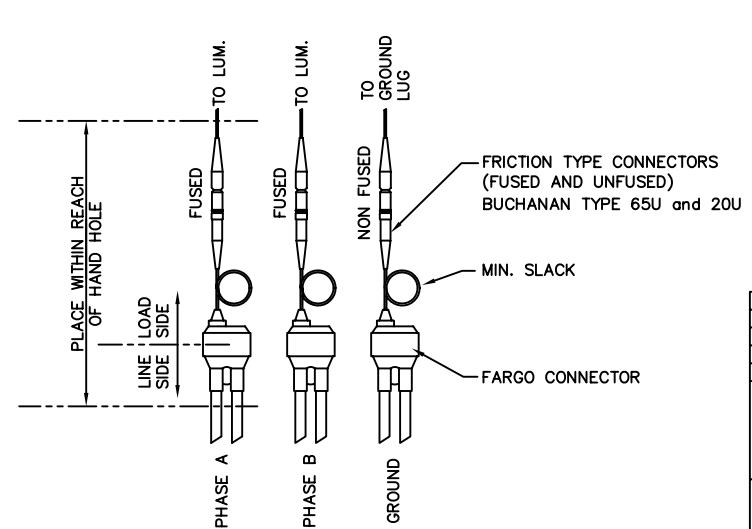


- CONTROL CENTER SERVICE NOTES:**
- PROVIDE GROUND RODS AS REQUIRED (2 MIN.) FOR MAXIMUM OF 25 OHMS RESISTANCE TO GROUND.
  - CONCRETE SLAB TO PROVIDE SEMIDRY WORKING AREA IN FRONT OF CONTROLLER CABINET. SLAB NOT REQUIRED WHEN THE FRONT OF THE CABINET ADJOINS A SIDEWALK. TOP OF PAD THE MATCH SIDEWALK ELEVATION. IF DRAINAGE AWAY FROM PAD CAN NOT BE ACHIEVED, NOTIFY CITY ENGINEER BEFORE INSTALLATION OF PAD.

CONCRETE PAD FOUNDATION



FARGO CONNECTOR



LIGHT POLE BASE WIRING DETAIL

DATE	REVISION	BY	APPR

STREET LIGHTING INSTALLATION  
CONTROL CENTER, CONNECTORS AND SERVICE DETAILS  
**PROJECT**  
PUBLIC WORKS - ENGINEERING

PROJ. NO.	XX-XXXX	SLDETAIL01.DWG	02 JAN 02
DATE	XX-XX-XXXX	DETAIL 1 of 4	
DESIGNED	XXX		
DESIGN CK	XXX		
DETAILED	XXX		
DETAIL CK	XXX		

SHEET **X** OF **XX**

