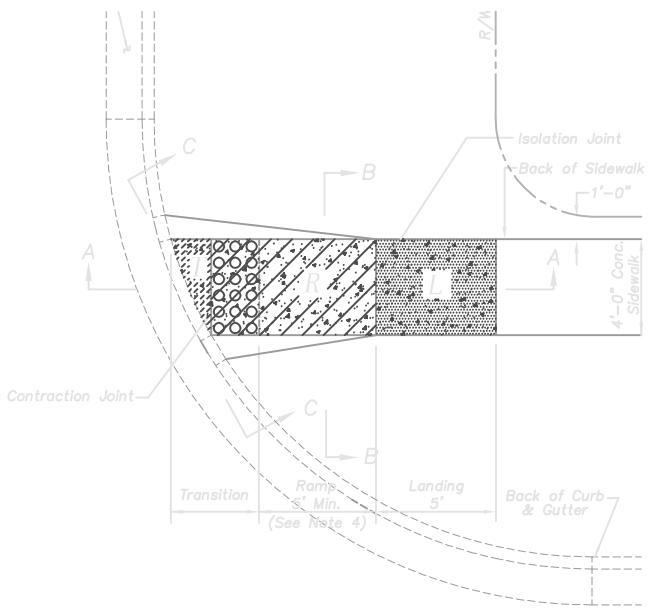
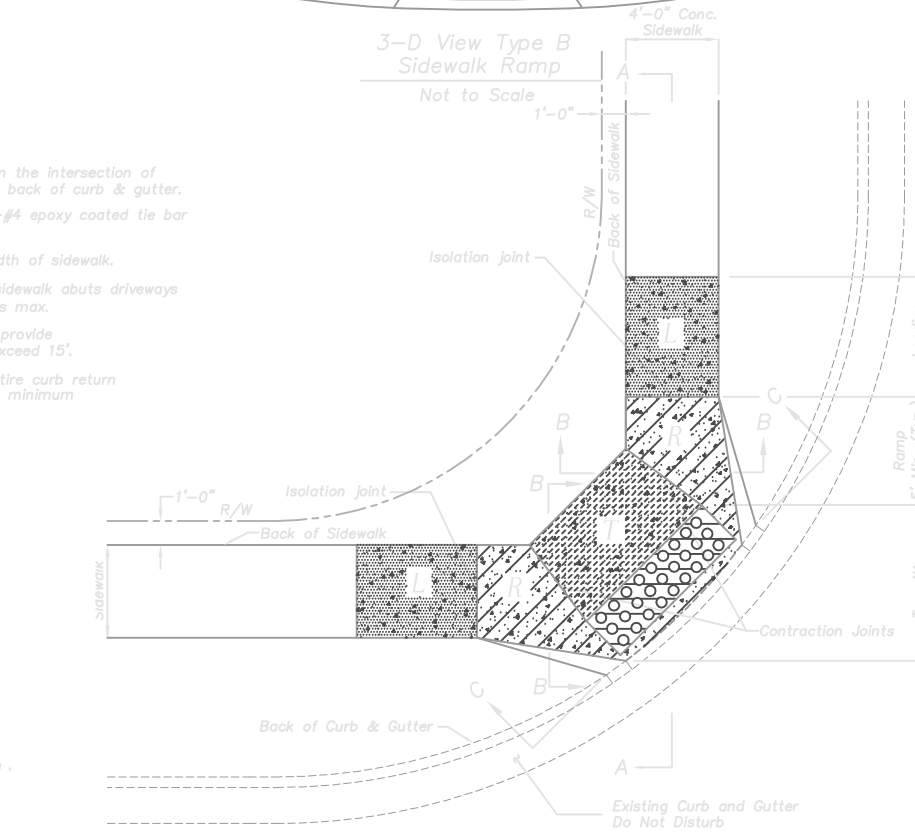


3-D View Type A Sidewalk Ramp  
Not to Scale



Type A Sidewalk Ramp  
Scale: 1/4"=1'-0"

3-D View Type B Sidewalk Ramp  
Not to Scale



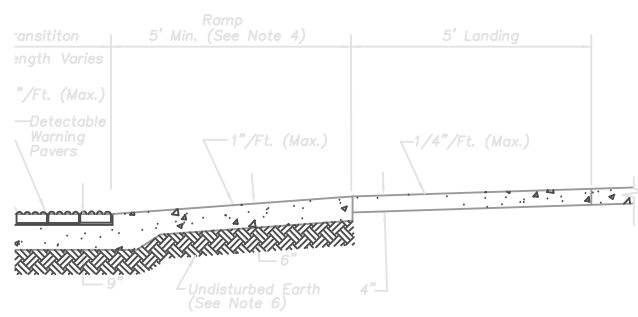
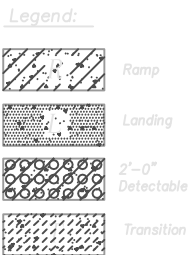
Type B Sidewalk Ramp  
Scale: 1/4"=1'-0"

3-D View Type C Sidewalk Ramp  
Not to Scale

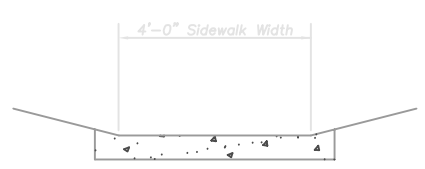


Type C Sidewalk Ramp  
Scale: 1/4"=1'-0"

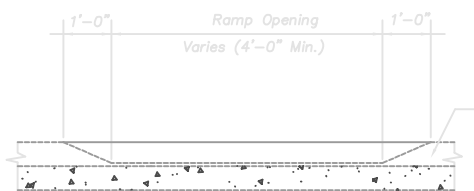
- Sidewalk Ramp Notes:**
1. Sidewalk ramp location determined from the intersection of the extension of back of sidewalk and back of curb & gutter.
  2. Key all construction joints or use 18"-#4 epoxy coated tie bar @ 12" o.c.
  3. Longitudinal joint spacing to match width of sidewalk.
  4. Isolation joints shall be placed where sidewalk abuts driveways and similar structures, and 250' centers max.
  5. Sidewalk Ramp shall be lengthened to provide ADA compliance slope but need not exceed 15'.
  6. Landing for Type C ramp along the entire curb return is preferred, but may be shortened to minimum ADA compliant dimension.



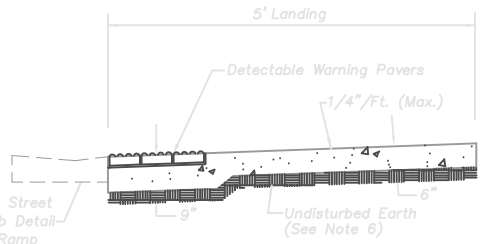
Section A-A  
Type A & B Sidewalk Ramp  
Scale: 1/2"=1'-0"



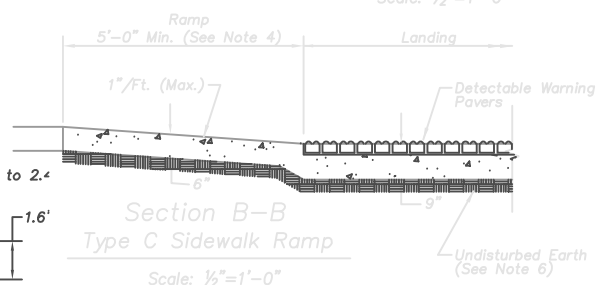
Section B-B  
Type A Sidewalk Ramp  
Scale: 1/2"=1'-0"



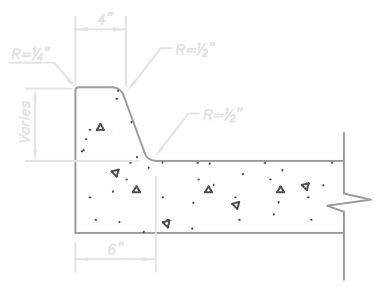
Section C-C  
Type A & B Sidewalk Ramp  
Scale: 1/2"=1'-0"



Section A-A  
Type C Sidewalk Ramp  
Scale: 1/2"=1'-0"



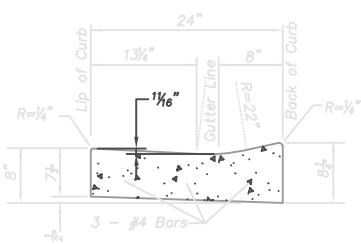
Section B-B  
Type C Sidewalk Ramp  
Scale: 1/2"=1'-0"



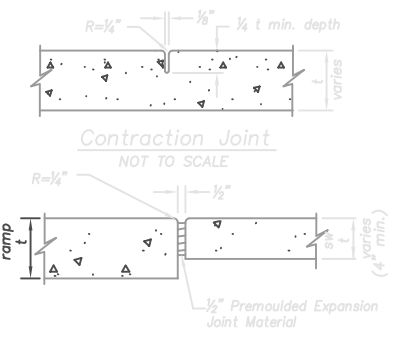
Ramp Curb Detail  
NOT TO SCALE



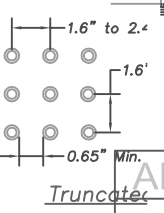
Street Curb Detail at Ramp  
NOT TO SCALE



Use With Type B Curb



Isolation Joint  
NOT TO SCALE



**AMERICAN PUBLIC WORKS ASSOCIATION**  
KANSAS CITY  
METROPOLITAN CHAPTER  
STANDARD DRAWING  
NUMBER SW - 1  
ADOPTED:  
DECEMBER 18, 2002

SIDEWALK RAMP DETAILS